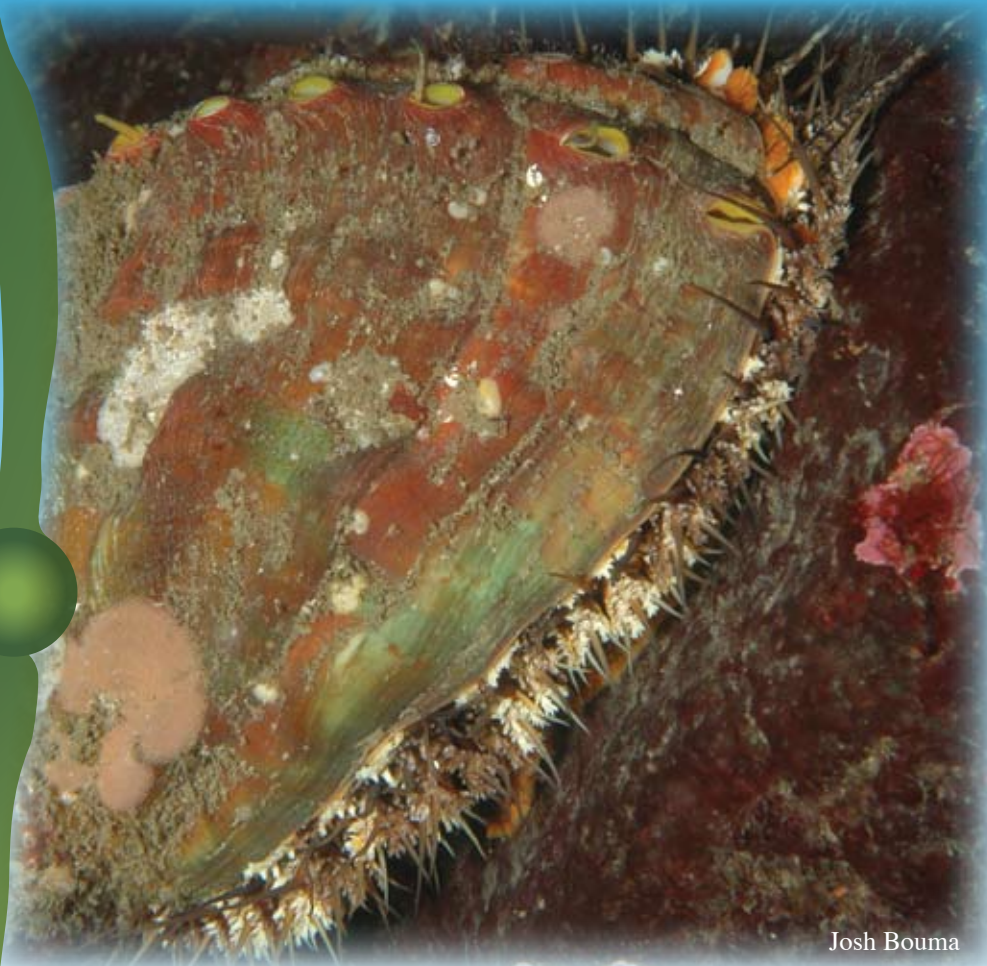


# PINTO ABALONE NEED YOU!

Pinto, or northern, abalone are declining at drastic rates. Since 1992, there has been a 77% decline in abundance and fewer young abalone are found. Local abalone populations are becoming rare and may face extinction within a few years.

## YOU CAN HELP:

- Hunting pinto abalone is illegal; do not disturb or remove.
- Anonymously report poachers (1-877-933-9847).
- Share this information with your fellow divers & community members.
- Report abalone sightings at [www.reef.org](http://www.reef.org).
- Learn more at [www.pintoabalone.org](http://www.pintoabalone.org).



Josh Bouma



Janna Nichols

Pinto abalone in the wild



Josh Bouma

Microscopic abalone larva



Josh Bouma

Juvenile abalone raised for restoration

## Abalone fast facts:

- Abalone release sperm and eggs into the water, so they must be close together in sufficient numbers to reproduce.
- The pinto abalone is the only known species of abalone in Washington State.
- Washington State has never had a commercial fishery for abalone. Recreational fishing for abalone has been illegal since 1994.
- Partners around the Puget Sound are working together to restore local pinto abalone populations - but this will take time!

